



# Why Nueces Electric Co-op Opted-In to Electric Competition

Presented by  
John L. Sims  
Executive Manager,  
Nueces Electric Cooperative, Inc.



# Member Voice

- Members expressed interest in having “choice” during 2000 NEC Annual Membership Meeting
- Board reviewed what “opting-in” involved
  - *HIGH Costs*
    - ERCOT and electronic data interfacing
    - Creation of new competitive retail division in partnership with G&T, South Texas Electric Co-op
    - Complex changes in member service processes (billing, new service, anti-competitive issues, etc.)
    - More regulatory compliance requirements
  - *Are there other efficiencies or benefits for members/co-op to be gained from opting-in?*



# Member Voice

## Benefits To Be Gained by Co-op/Members

- ***Single Certification***
  - 30-40% of NEC distribution territory was dually certificated
- ***Expand membership & gain economies of scale efficiencies to help eventually lower rates for members***
- ***Expand “public power message” to IOU areas – including larger cities in Texas***
- ***Reduce customer confusion***
- ***Improve system density and therefore reliability and utilization***
- ***Allow better system planning & design***
- ***Reduce amount of public/private land needed for right-of-way and easements***
  - NEC estimated line retirements from project
    - ***36.35 miles of single-phase***
    - ***10.14 miles of v-phase***
    - ***31.15 miles of three-phase***
- ***Improve aesthetics***
- ***Retail electric choice for NEC members***

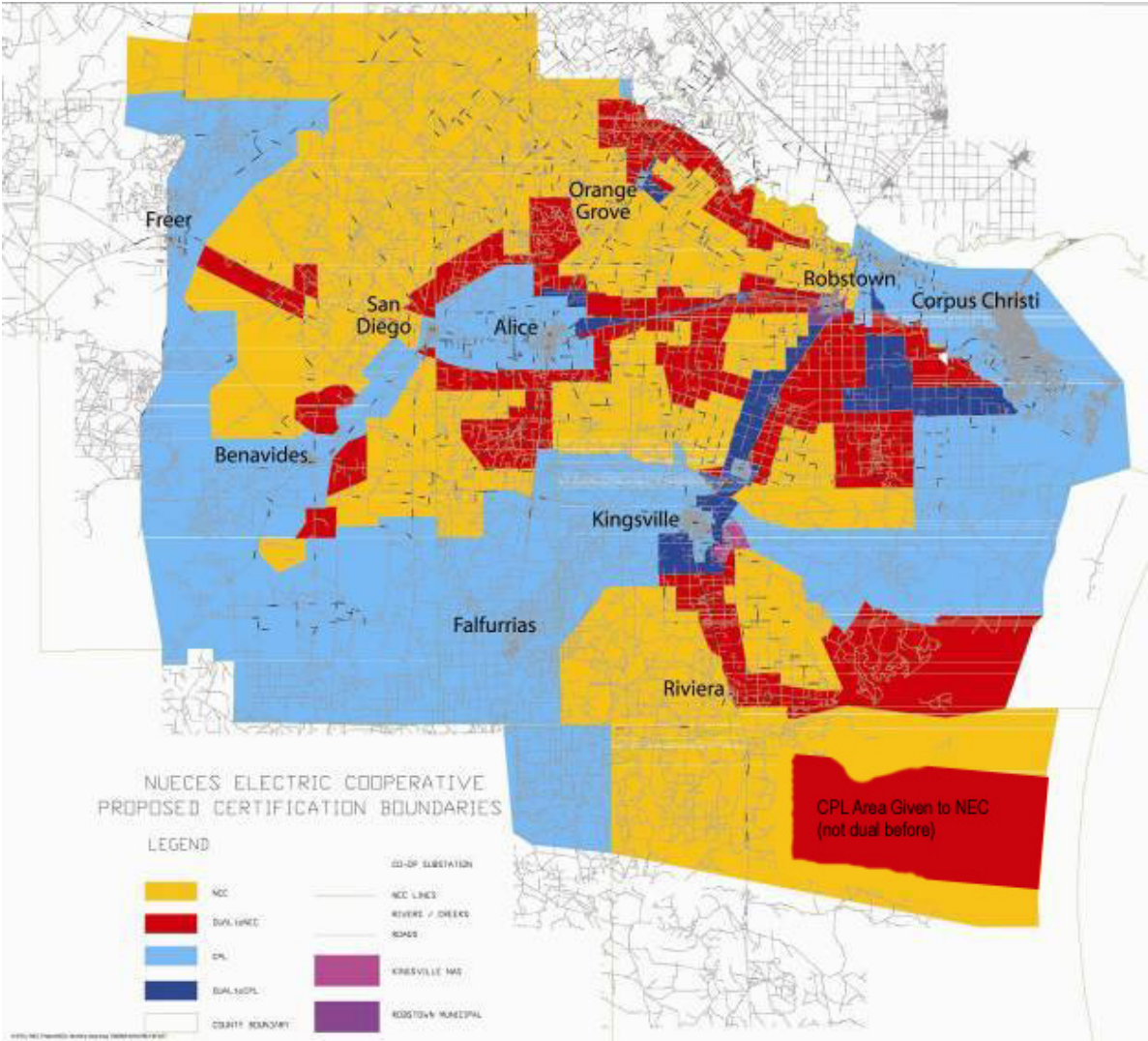


 Nueces Electric Cooperative  
Your Touchstone Energy Cooperative 

# NEC & AEP TCC Territory Project

- Filed with PUCT in January 2005
- Proposed NEC would open its distribution territory to competitive providers (opt-in) contingent on elimination of dually certificated distribution territory with AEP TCC
- PUCT approved project in June 2005
- Immediately began 20 phase territory transition process completed by end of June 2006

# NEC/AEP TCC Territory Changes

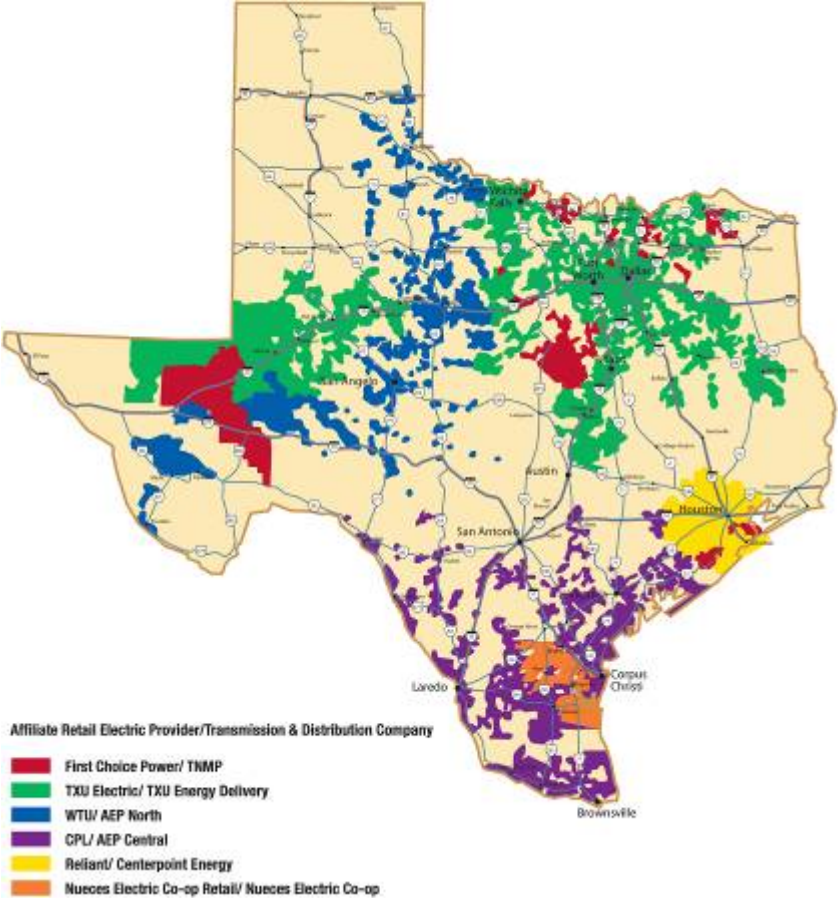


# NEC Service Areas Today

## NEC Distribution Territory



## NEC Retail Service Area





# NEC Distribution Area Today

- **NEC Distribution Area Active Billings**

*July 31, 2005: 13,107 → Dec. 31, 2006: 16,298*

*= Increase of 24%*

- **Competitive Retailer Options**

- **9 Commercial & Industrial**

- **2 Residential Options (including NEC Retail)**

- **Switching Activity (# not with NEC Retail)**

- **9 Residential**

- **113 Small Commercial**

**Competitive Retailers Qualified To Serve Consumers Located in the Nueces Electric Co-op (NEC) Electric Distribution Service Area\***  
Updated 2/19/07

PLEASE NOTE: NEC opened its service area to competitive retail electric providers (CRs) in June 2006. At this time, the competitive retailers (CRs) listed below have completed the process to qualify to serve NEC area consumers and you may choose one of them for your power supplier. We hope to have more provider options for you to choose from in the future. Please monitor the *Texas Co-op Power* magazine (sent monthly to all NEC members) and/or our website at [www.nueceselectric.org](http://www.nueceselectric.org) for updated CR provider lists. These can also be obtained at our offices at 709 E. Main Street in Robstown, TX and at 123 County Road 1026 in Ricardo, TX.

Competitive Retail Power Provider	Phone Number	E-Mail/Website
CHAMPION ENERGY SERVICES	1-877-653-5090	COMMERCIAL & INDUSTRIAL OVER 40,000 KWH/YEAR
CONSTELLATION NEW ENERGY		LARGE COMMERCIAL & INDUSTRIAL (50 KW OR LARGER)
CORAL POWER SOLUTIONS CORAL POWER, LLC	713-767-5400	LARGE COMMERCIAL & INDUSTRIAL ONLY
DYNEGY	877-4DYNEGY (877-439-6349)	<a href="mailto:dms@dynegy.com">dms@dynegy.com</a>
HINO ELECTRIC POWER COMPANY	1-866-446-6797 Monday-Friday, 8 am-5 pm	<a href="http://www.hinoelectric.com">www.hinoelectric.com</a> COMMERCIAL & INDUSTRIAL
MPOWER	1-888-202-4770	COMMERCIAL & INDUSTRIAL ONLY
NUECES ELECTRIC CO-OP RETAIL DIVISION (NEC RD)	ROBSTOWN/CORPUS CHRISTI 1-361-387-2581; TOLL-FREE 800-NEC-WATT (800-632-9288)	<a href="http://www.necretail.com">www.necretail.com</a> RESIDENTIAL, COMMERCIAL & INDUSTRIAL
TENASKA		(LARGE COMMERCIAL & INDUSTRIAL ONLY)
TEXAS POWER	1-866-744-6366	<a href="http://www.texaspoweronline.com/switch">http://www.texaspoweronline.com/switch</a> RESIDENTIAL, SMALL NON-RESIDENTIAL AND SMALL COMMERCIAL
VANTAGE POWER SERVICES	1-888-886-2436 Monday-Friday 8 am- 5pm	<a href="http://www.vantageps.com">www.vantageps.com</a> COMMERCIAL & INDUSTRIAL
WPS ENERGY	1-866-904-9595	<a href="mailto:txcustomerare@wpsenergy.com">txcustomerare@wpsenergy.com</a>

\*Regardless of the company you choose as your power supplier, remember that your energy delivery needs will always be the responsibility of Nueces Electric Cooperative (NEC) and you have the right to contact us with questions regarding your electricity needs at any time.



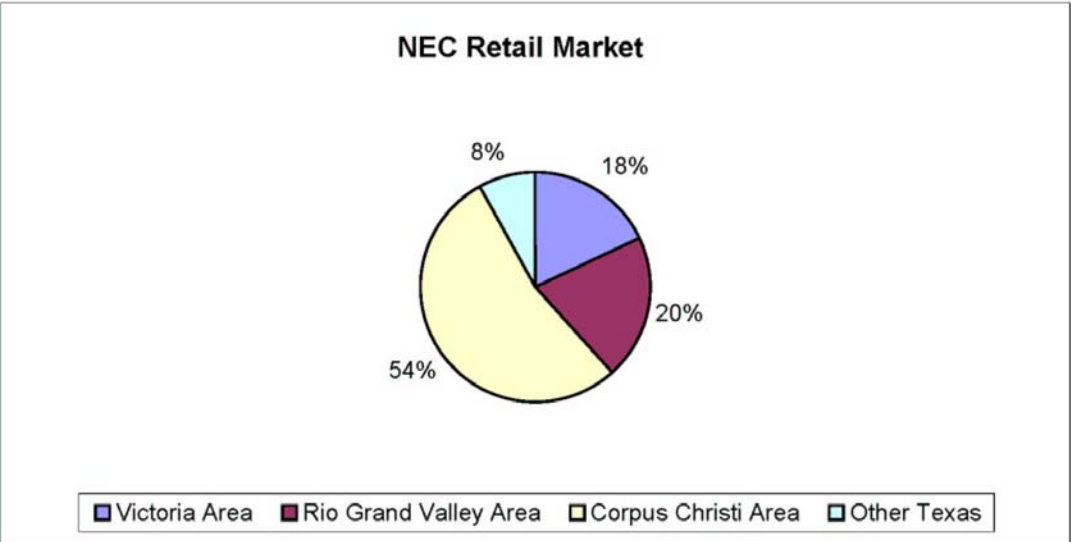
# NEC Retail Today

## NEC Retail in IOU areas (as of 1/31/07):

- 11,651 Total Services
  - By TDSP Area

AEP TCC	AEP North	CenterPoint	TXU	TNMP
11,604	7	29	10	1

- By Demographic Market Area





 Nueces Electric Cooperative  
Your Touchstone Energy® Cooperative 

# Questions?

John L. Sims  
Executive Manager,  
Nueces Electric Cooperative, Inc.