



# DISTRIBUTED SOLAR PROGRAM



# Topics for Discussion

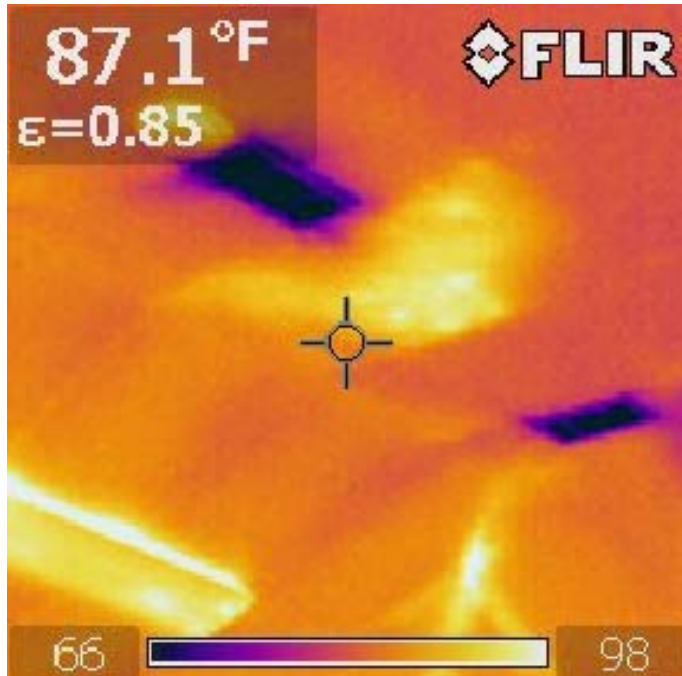
- Denton Municipal Electric (DME)
- GreenSense Incentive Program
- Lessons Learned
- Other Considerations



- Municipally owned since 1905
- 50,000+ customers
- National leader in public power, providing 40% wind energy to every customer while maintaining competitive and reliable rates
- Currently implementing the Renewable Denton Plan to increase renewable power from 40% to 88% by 2019



# GreenSense Incentive Program



- Free In-Home Energy Audits
- Energy Efficiency Rebates
  - Residential, Multifamily, and Small Commercial
- Standard Offer Incentive
  - Medium and Large Commercial
- Engineering Audit
  - Industrial
- Services for ERCOT's Emergency Response Service (ERS) Program

# Program Evolution

## 1998 – EnergySave Program

- *High efficiency HVAC Upgrade Rebate to Customers*
- *Efficient New Home Rebate to Builders*



## 2009 – GreenSense Rebate Program

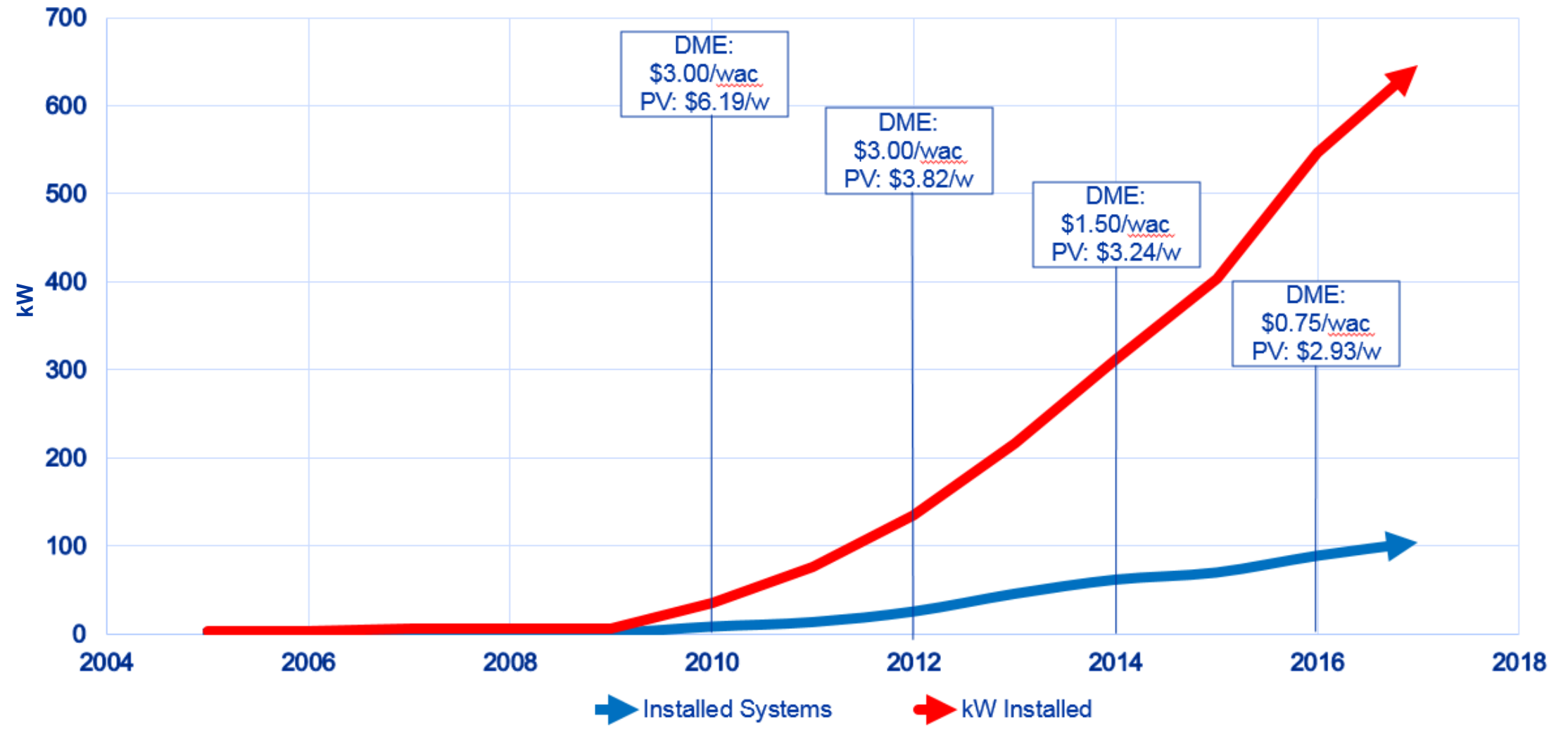
- *Windows, Insulation, Radiant Barrier, HVAC, Smart Thermostats, Air Ducts, Solar Screens and Solar Water Heater*
- **Solar Photovoltaic (PV) Systems**

## 2016 – GreenSense Incentive Program

- *Battery Storage with PV Installs*



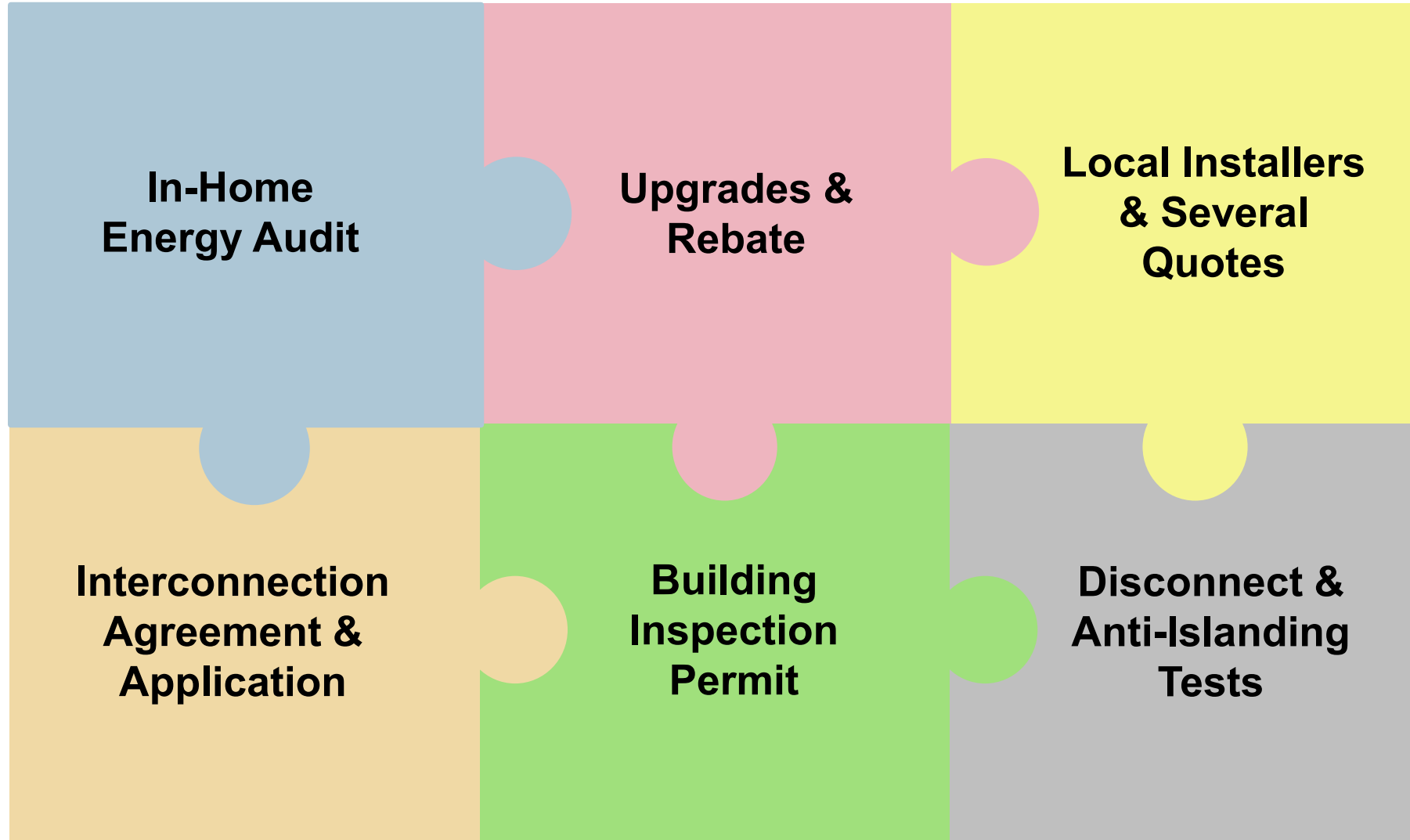
# DME's Solar Trend



\* PV prices pulled from NREL 2016 Report. Prices include soft costs.



# Putting the Solar Pieces Together



# Lessons Learned

- Communication:
  - *All Departments*
  - *No such thing as too much marketing*
- Proper Documentation Process:
  - *Understanding of other departments' install requirements*
  - *Transparent and concise paper trail*
- Budget for the Amount of Participants Anticipated:
  - *Separate PV incentives from other energy efficient incentives*
  - *Provide an incentive cap per participant*





# Other Considerations

- 1) Does DME want to buy generation from PV participants?
- 2) Are existing meters capable of capturing both consumption and generation?
- 3) Is the base rate recovery impacted?
- 4) Is the billing system capable of calculating and applying credits?

Customer	Cost	kWh Consumed	kWh Returned	Billed
		1000	1000	
Facility	\$8.67			\$8.67
Tier 1	\$0.0684	\$41.04	(\$41.04)	\$0.00
Tier 2	\$0.0455	\$18.20	(\$18.20)	\$0.00
ECA	\$0.0361	\$36.10	0	\$36.10
RCA	\$0.0401	0	(\$40.10)	(\$40.10)
		Total		\$4.67

# Questions

**Tabitha Millsop**

Business Analyst

(940) 349-7529

[Tabitha.Millsop@cityofdenton.com](mailto:Tabitha.Millsop@cityofdenton.com)